

# Image Compositing Artifact

Joseph Junewick, MD FACR

01/10/2012

---

## History

2 year old male with halo traction for scoliosis.

## Diagnosis

Image Compositing Artifact

## Discussion

Image composite artifact occurs when multiple separate radiographic images are sewn together to make a single image. Usually 2 or 3 CR cassettes are arranged into a single holder with a slight overlap. Using fiducial markings in the images, the overlapping exposures are digitally combined. Failure to recognize this artifact can incorrectly attribute pathology.

## Findings

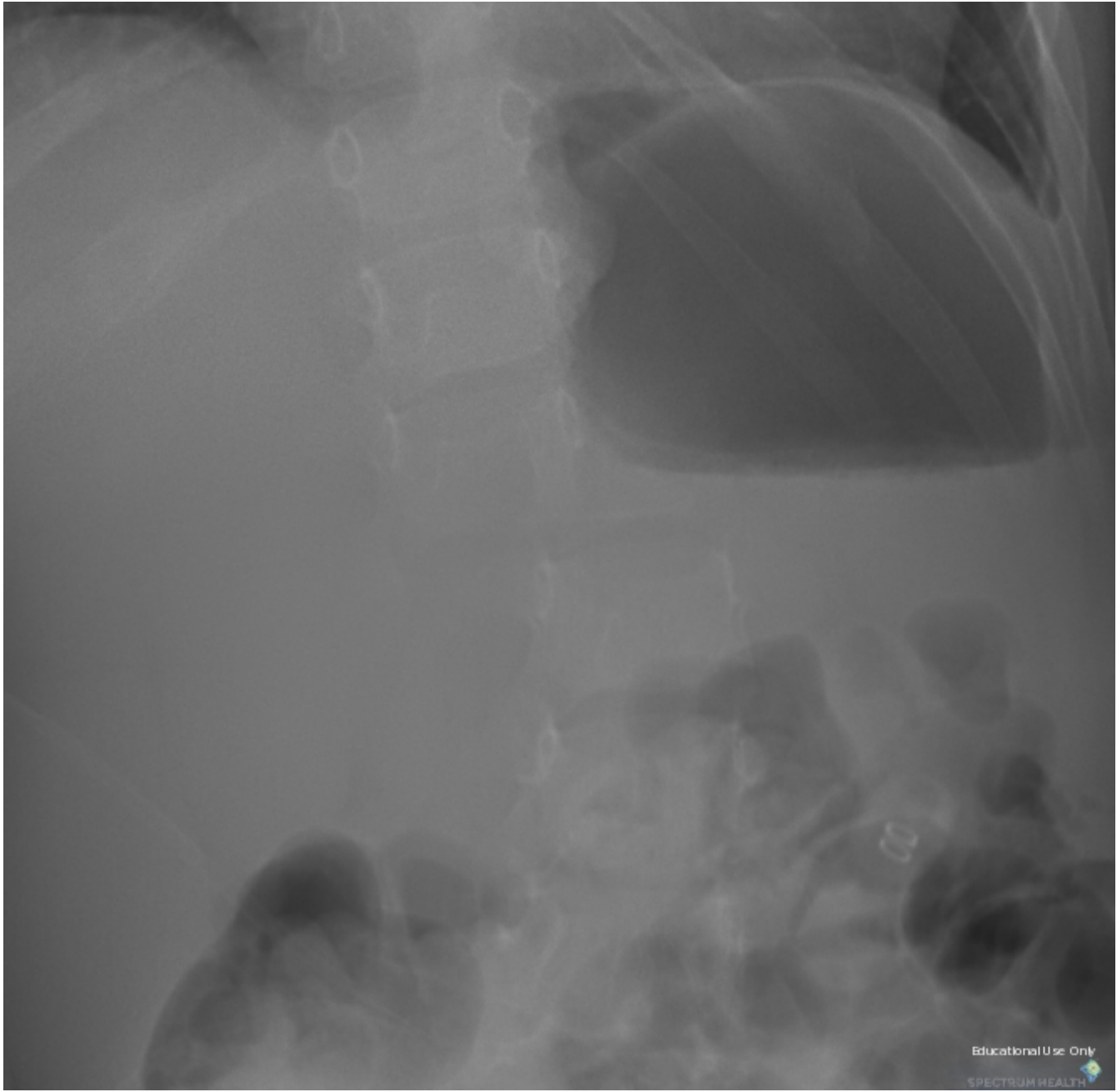
CR-AP scoliosis radiograph shows apparent "spinal dislocation" in the upper lumbar region.

## Reference

Walz-Flannigan A, Magnuson D, Erickson D, Schueler B. Artifacts in digital radiography. AJR (2012); 198:156-161.

---





---

## Sponsored By



### Disclaimer

This teaching site is partially funded by an educational grant from GE Healthcare and Advanced Radiology Services, PC. The material on this site is independently controlled by Advanced Radiology Services, PC, and GE Healthcare and Spectrum Health have no influence over the content of this site  
Content Download Agreement

The cases and images on this website are owned by Spectrum Health. Permission is granted (for nonprofit educational purposes) to download and print materials to distribute for the purpose of facilitating the education of health professionals. The authors retain all rights to the material and users are requested to acknowledge the source of the material.

### Site Disclaimer

This site is developed to reach healthcare professionals and medical students. Nothing this site should be considered medical advice.

Only your own doctor can help you make decisions about your medical care. If you have a specific medical question or are seeking medical care, please contact your physician.

The information in this website is provided for general medical education purposes only and is not meant to substitute for the independent medical judgment of a physician relative to diagnostic and treatment options of a specific medical condition.

The viewpoints expressed in these cases are those of the authors. They do not represent an endorsement. In no event will Advanced Radiology Associates, PC, Spectrum Health Hospitals (Helen DeVos Children's Hospital) or GE Healthcare be liable for any decision made or action taken in reliance upon the information provided through this website.