

Mediastinal Bronchogenic Cyst

Joseph Junewick, MD FACR

09/07/2011

History

3 year old male with difficulty breathing.

Diagnosis

Mediastinal Bronchogenic Cyst

Additional Clinical

Pathology-Thick wall cystic mass with fibrous tissue, mucous glands and cartilage lined by pseudostratified respiratory epithelium. No thymic or thyroid tissue present.

Discussion

Bronchogenic cysts are congenital lesions thought to result from abnormal budding of the ventral foregut. Most cysts are located in the mediastinum (usually middle) and less commonly within the lung parenchyma, pleura, or diaphragm (a stalk attaching the cyst to the mediastinum is often found). Bronchogenic cysts are sometimes found in association with other congenital pulmonary malformations. Most patients are diagnosed in the first few decades of life. Symptoms are present in just greater than half of patients with chest pain and symptoms related to mass effect on adjacent structures being the most common. Fluid within bronchogenic cysts is usually a mixture of water and proteinaceous mucus and may result in higher attenuation on measurement.

Findings

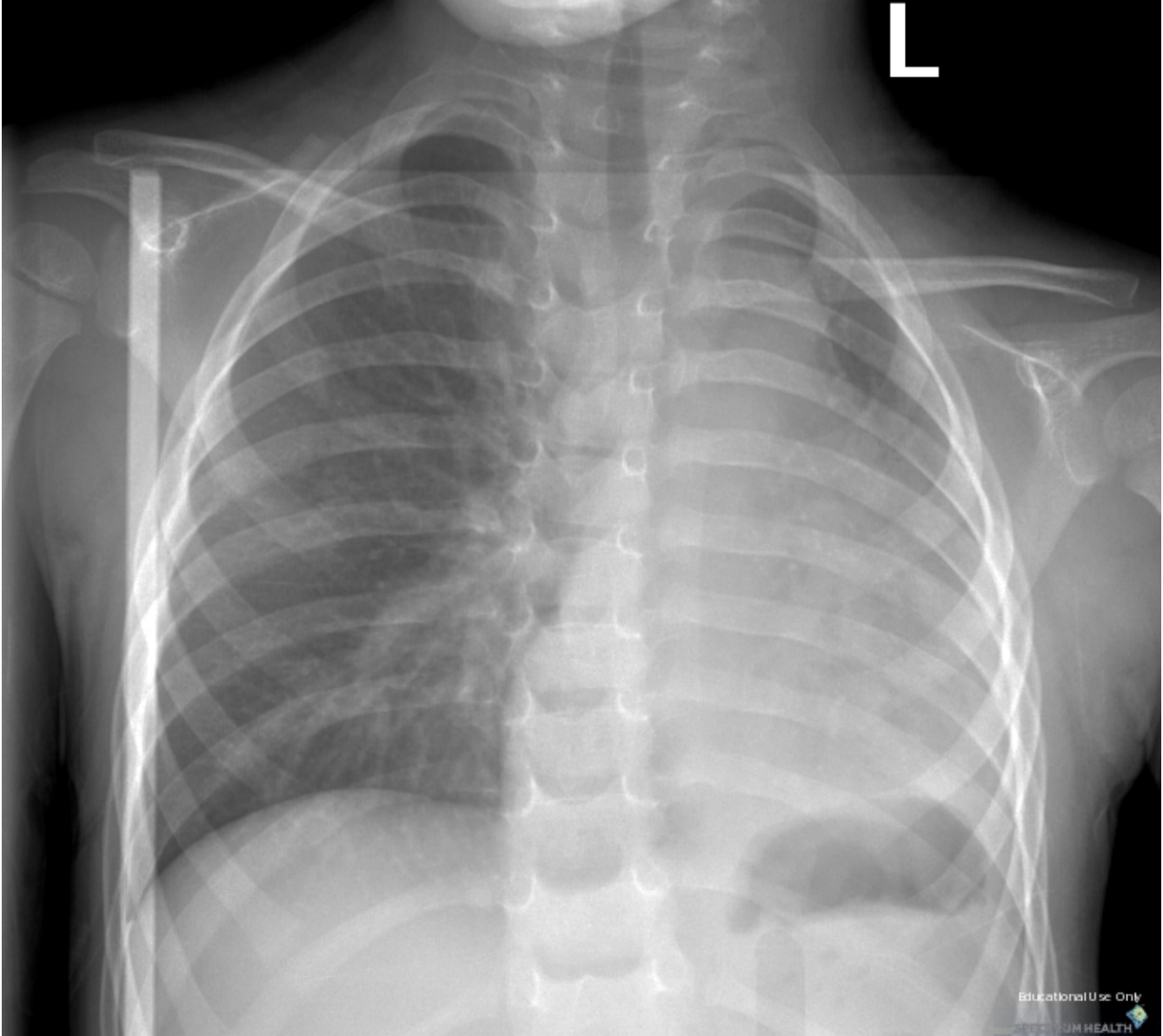
CR-Hazy opacity in left hemithorax with ipsilateral shift of the mediastinum and elevation of the left hemidiaphragm.

CT-Multiplanar imaging shows a cystic middle mediastinal mass and left lung atelectasis.

Reference

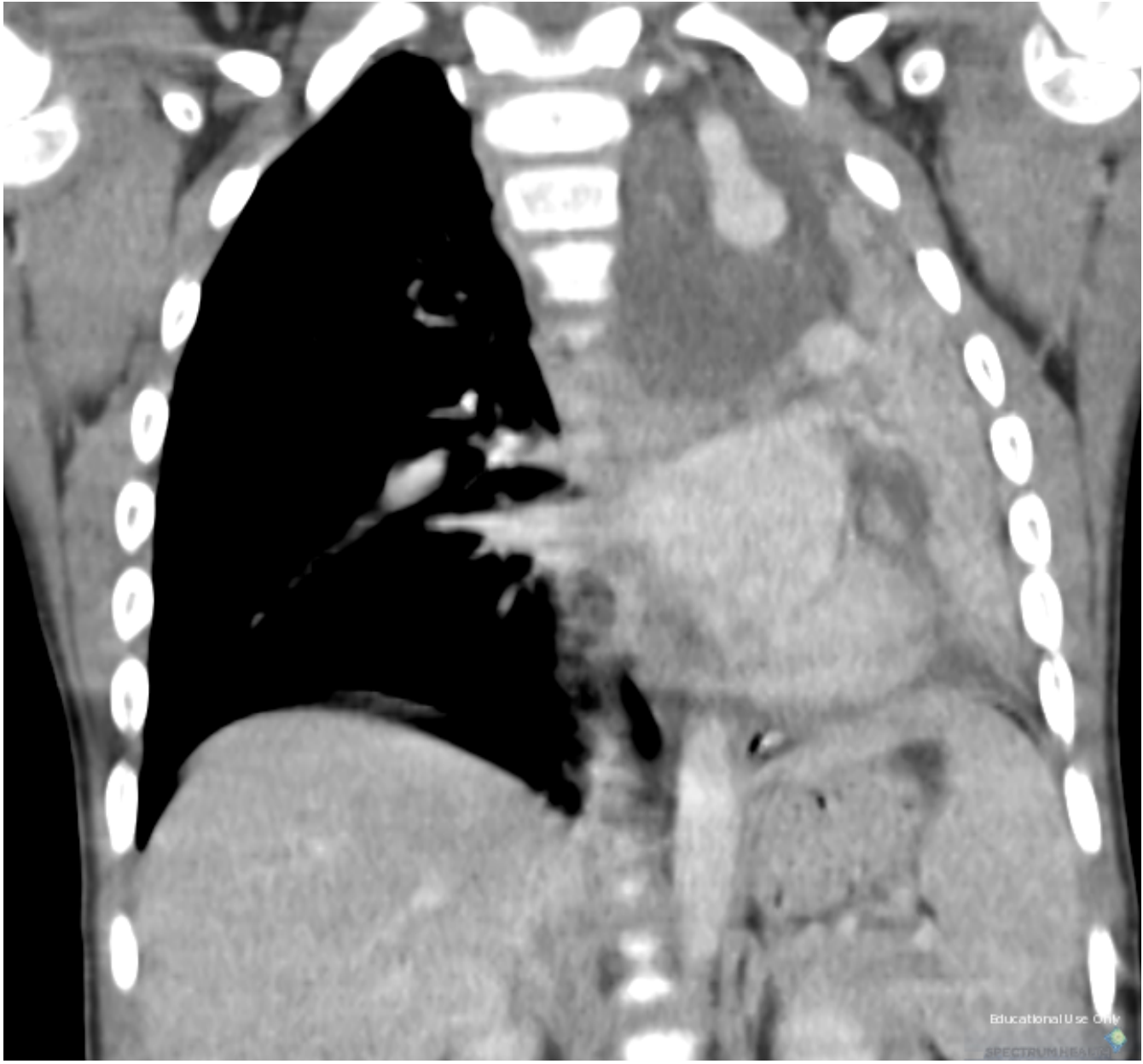
McAdams HP, Kirejczyk WM, Rosado-de-Christenson ML, et al. Bronchogenic Cyst: Imaging Features with Clinical and Histopathologic Correlation
Radiology (2000); 217: 441-446.

L





Educational Use Only
SPECTRUM HEALTH





Sponsored By



Disclaimer

This teaching site is partially funded by an educational grant from GE Healthcare and Advanced Radiology Services, PC. The material on this site is independently controlled by Advanced Radiology Services, PC, and GE Healthcare and Spectrum Health have no influence over the content of this site
Content Download Agreement

The cases and images on this website are owned by Spectrum Health. Permission is granted (for nonprofit educational purposes) to download and print materials to distribute for the purpose of facilitating the education of health professionals. The authors retain all rights to the material and users are requested to acknowledge the source of the material.

Site Disclaimer

This site is developed to reach healthcare professionals and medical students. Nothing this site should be considered medical advice.

Only your own doctor can help you make decisions about your medical care. If you have a specific medical question or are seeking medical care, please contact your physician.

The information in this website is provided for general medical education purposes only and is not meant to substitute for the independent medical judgment of a physician relative to diagnostic and treatment options of a specific medical condition.

The viewpoints expressed in these cases are those of the authors. They do not represent an endorsement. In no event will Advanced Radiology Associates, PC, Spectrum Health Hospitals (Helen DeVos Children's Hospital) or GE Healthcare be liable for any decision made or action taken in reliance upon the information provided through this website.