

Hill-Sachs Deformity

Joseph Junewick, MD FACR

09/07/2011

History

Young man with shoulder pain; possible dislocation.

Diagnosis

Hill-Sachs Deformity

Discussion

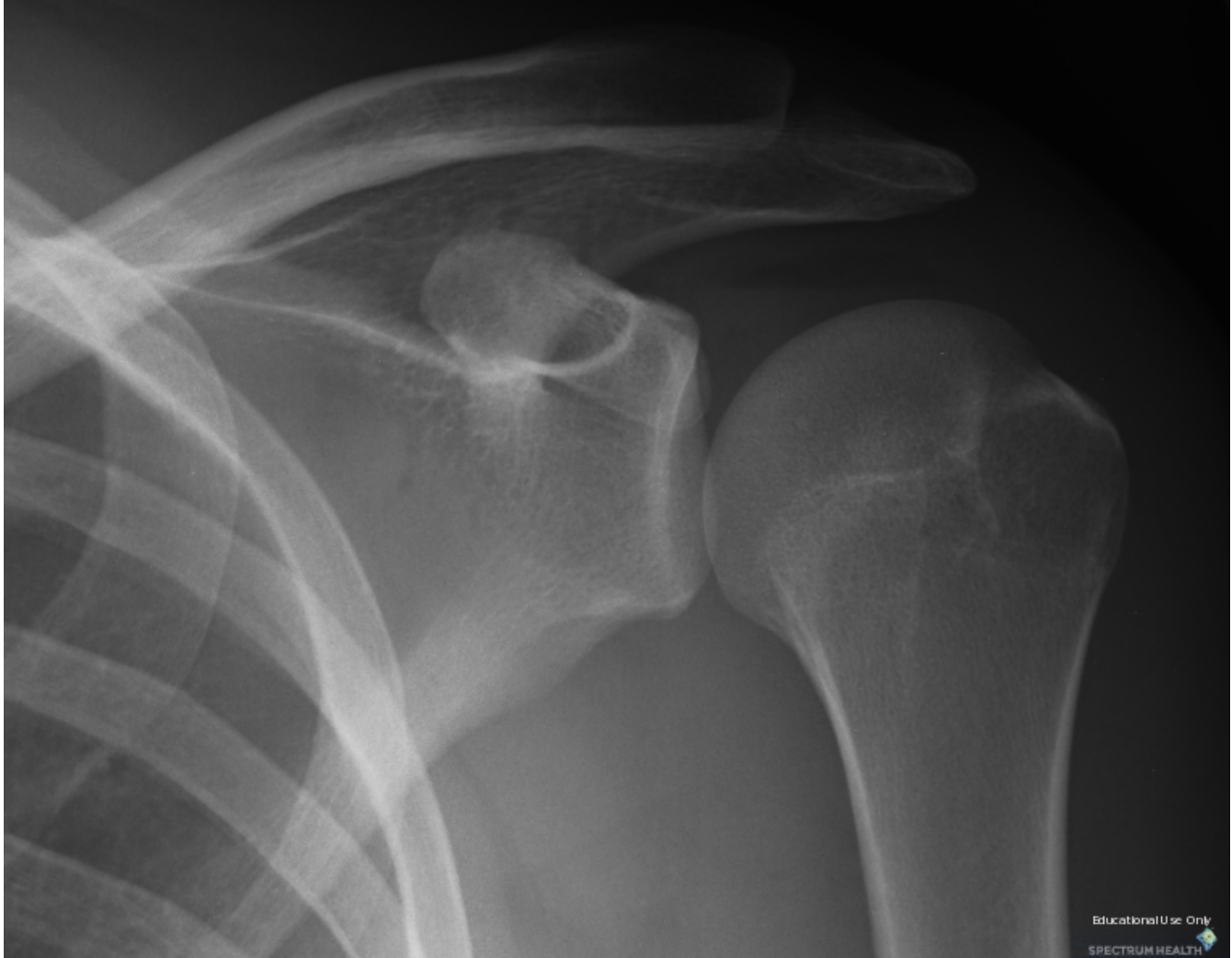
Contour deformity of the posterolateral humeral head occurs from impaction of the humerus against the anterior labrum during anterior subcoracoid shoulder dislocation. The presence of a fat-fluid level in a joint indicates leakage of marrow fat as a result of an intra-articular fracture.

Findings

CR-Upright AP view demonstrates an impaction fracture with contour deformity of the superolateral humeral head. The glenohumeral relationship is normal. Fat-fluid level in shoulder joint (subacromial space) indicates an acute injury.

Reference

Workman TL, Burkhard TK, Resnick D, et al. Hill-Sachs lesion: comparison of detection with MR imaging, radiography, and arthroscopy. *Radiology*. 1992 Dec;185(3):847-52.



Sponsored By



Disclaimer

This teaching site is partially funded by an educational grant from GE Healthcare and Advanced Radiology Services, PC. The material on this site is independently controlled by Advanced Radiology Services, PC, and GE Healthcare and Spectrum Health have no influence over the content of this site
Content Download Agreement

The cases and images on this website are owned by Spectrum Health. Permission is granted (for nonprofit educational purposes) to download and print materials to distribute for the purpose of facilitating the education of health professionals. The authors retain all rights to the material and users are requested to acknowledge the source of the material.

Site Disclaimer

This site is developed to reach healthcare professionals and medical students. Nothing this site should be considered medical advice.

Only your own doctor can help you make decisions about your medical care. If you have a specific medical question or are seeking medical care, please contact your physician.

The information in this website is provided for general medical education purposes only and is not meant to substitute for the independent medical judgment of a physician relative to diagnostic and treatment options of a specific medical condition.

The viewpoints expressed in these cases are those of the authors. They do not represent an endorsement. In no event will Advanced Radiology Associates, PC, Spectrum Health Hospitals (Helen DeVos Children's Hospital) or GE Healthcare be liable for any decision made or action taken in reliance upon the information provided through this website.