

---

# Giant Cell Reparative Granuloma of the Mandible

Joseph Junewick, MD FACR

07/21/2011

---

## History

Teenager with "cherubism".

## Diagnosis

Giant Cell Reparative Granuloma of the Mandible

## Discussion

Giant cell reparative granuloma is an uncommon lesion that is a reactive process and not a neoplasm. At histologic analysis, giant cell reparative granulomas demonstrate plump, bland fibroblasts and multinucleated giant cells surrounding foci of hemorrhage; osteoid production along hemorrhagic foci is commonly seen. The histologic appearance of GCRG is similar to that of brown tumor of hyperparathyroidism. GCRG occurs in patients in the 2nd and 3rd decades of life and has a predilection for the mandible and maxilla. Jaw lesions affect women more frequently than men (2:1 ratio). Patients present with pain and swelling; hormonal stimulation of pregnancy may lead to significant enlargement.

## Findings

CT-Axial and coronal images show marked expansion of the mandible by multi-septated lytic lesions. Bone survey shows polyostotic involvement.

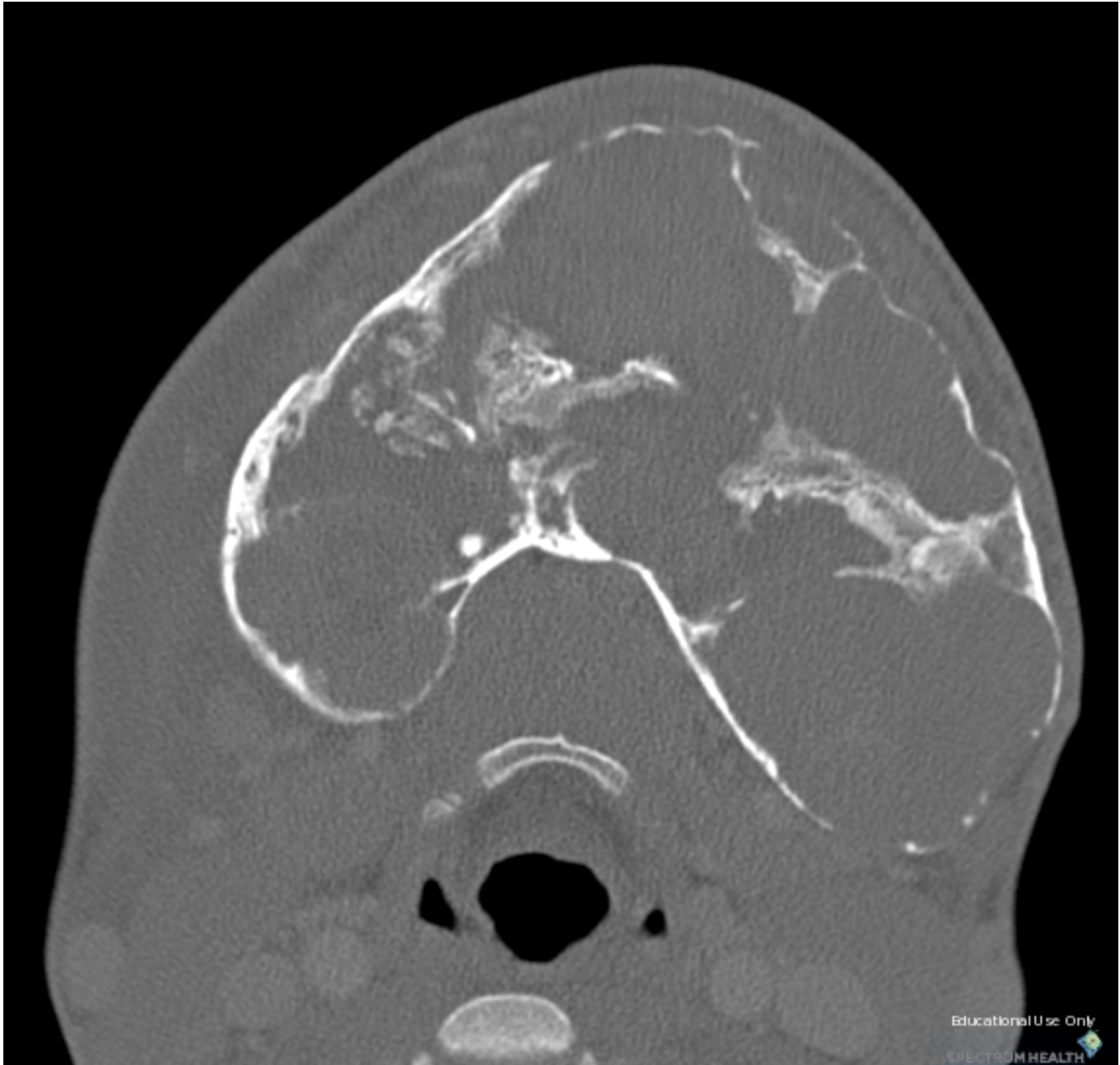
## Reference

Murphey MD, Nomikos GC, Flemming DJ, et al. Imaging of Giant Cell Tumor and Giant Cell Reparative Granuloma of Bone: Radiologic-Pathologic Correlation. *RadioGraphics* (2001); 21: 1283-1309.

## Contributor

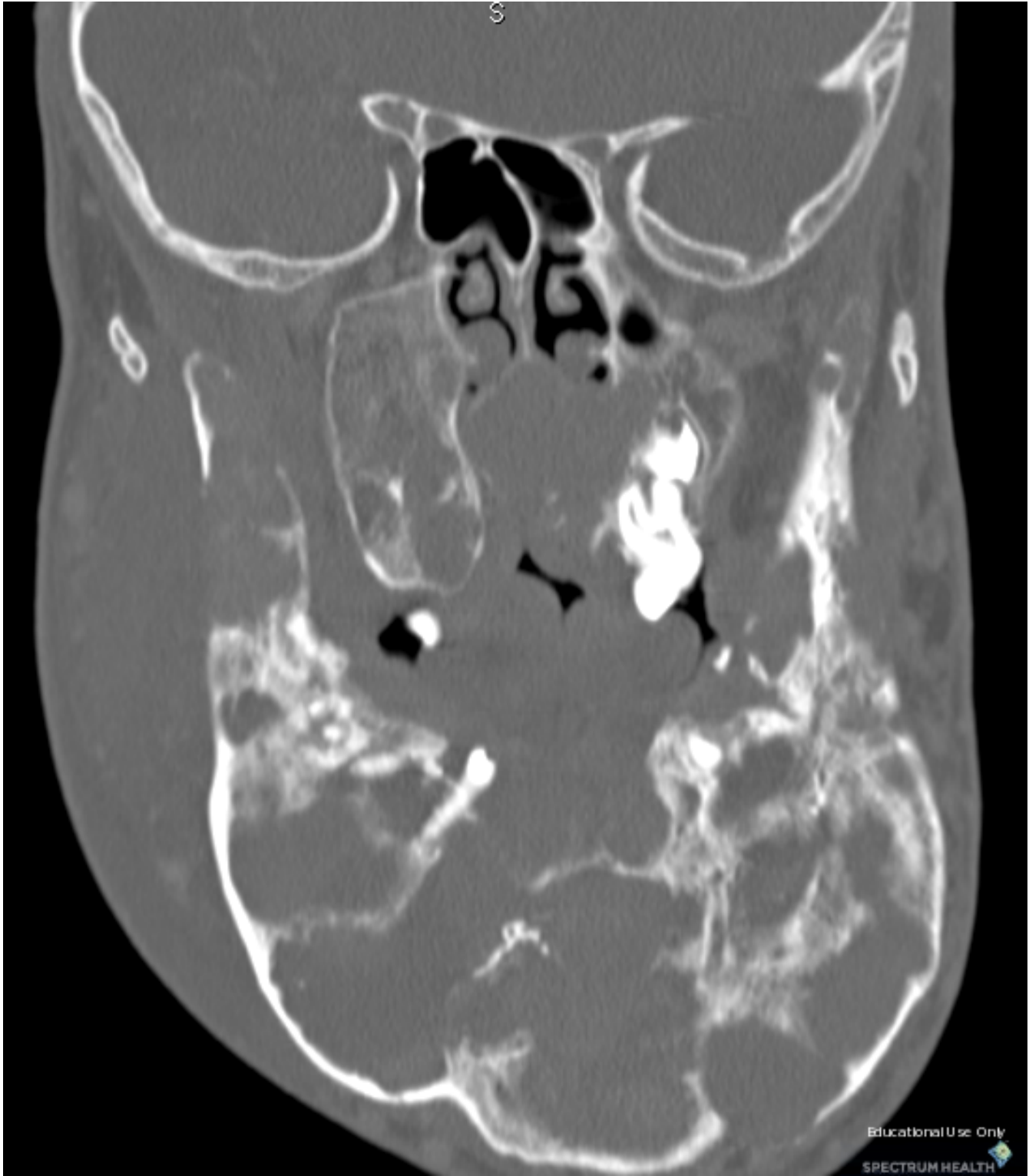
Steven Waslawski, MD

---



Educational Use Only

SPECTRUM HEALTH



---

## Sponsored By



### Disclaimer

This teaching site is partially funded by an educational grant from GE Healthcare and Advanced Radiology Services, PC. The material on this site is independently controlled by Advanced Radiology Services, PC, and GE Healthcare and Spectrum Health have no influence over the content of this site  
Content Download Agreement

The cases and images on this website are owned by Spectrum Health. Permission is granted (for nonprofit educational purposes) to download and print materials to distribute for the purpose of facilitating the education of health professionals. The authors retain all rights to the material and users are requested to acknowledge the source of the material.

### Site Disclaimer

This site is developed to reach healthcare professionals and medical students. Nothing this site should be considered medical advice.

Only your own doctor can help you make decisions about your medical care. If you have a specific medical question or are seeking medical care, please contact your physician.

The information in this website is provided for general medical education purposes only and is not meant to substitute for the independent medical judgment of a physician relative to diagnostic and treatment options of a specific medical condition.

The viewpoints expressed in these cases are those of the authors. They do not represent an endorsement. In no event will Advanced Radiology Associates, PC, Spectrum Health Hospitals (Helen DeVos Children's Hospital) or GE Healthcare be liable for any decision made or action taken in reliance upon the information provided through this website.