

Cystic mesenchymal hamartoma

Heather Borders, MD

08/23/2010

History

Newborn female with history of cystic mass on prenatal imaging. Possible bowel obstruction.

Diagnosis

Cystic mesenchymal hamartoma

Discussion

An ovarian cyst should be considered for a large cyst in a female neonate. Other considerations include a mesenteric cyst, duplication cyst, renal cyst, dilated bowel or neoplasm. An ovarian cyst was suspected in this case. At surgery, this was found to be arising from the liver. Pathology was compatible with a cystic mesenchymal hamartoma.

Mesenchymal hamartoma presents in infancy or childhood, most commonly at 16 months of age. LFT's usually remain normal.

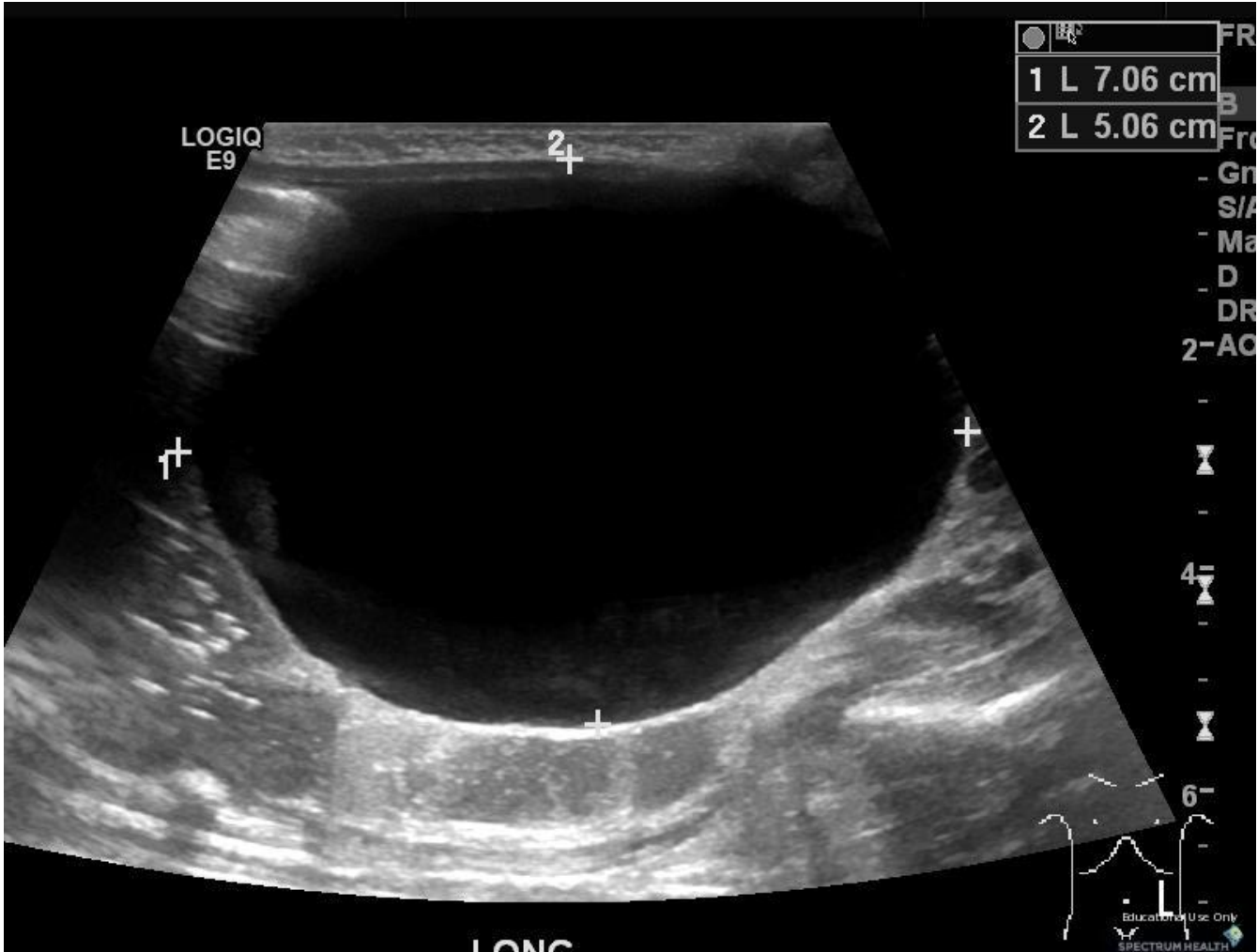
Mesenchymal hamartoma is a benign neoplasm of the liver due to proliferation of mesenchymal or connective tissue. Typically composed of multiple cysts with variable stroma. The composition depends on the relative proportion of cystic and mesenchymal tissue. When intrahepatic, the diagnosis is easier. In this case, the lesion was pedunculated and was also unilocular rather than multiseptated. Pathologically, multiple cysts with clear or mucoid material are identified. Microscopic pathology demonstrates loose mesenchymal tissue with bile ducts, hepatocytes and blood vessels. Surgical resection is definitive.

Findings

US demonstrates a large simple anechoic cyst in the left side of the abdomen of uncertain origin.

Reference

Statdx. Mesenchymal hamartoma.

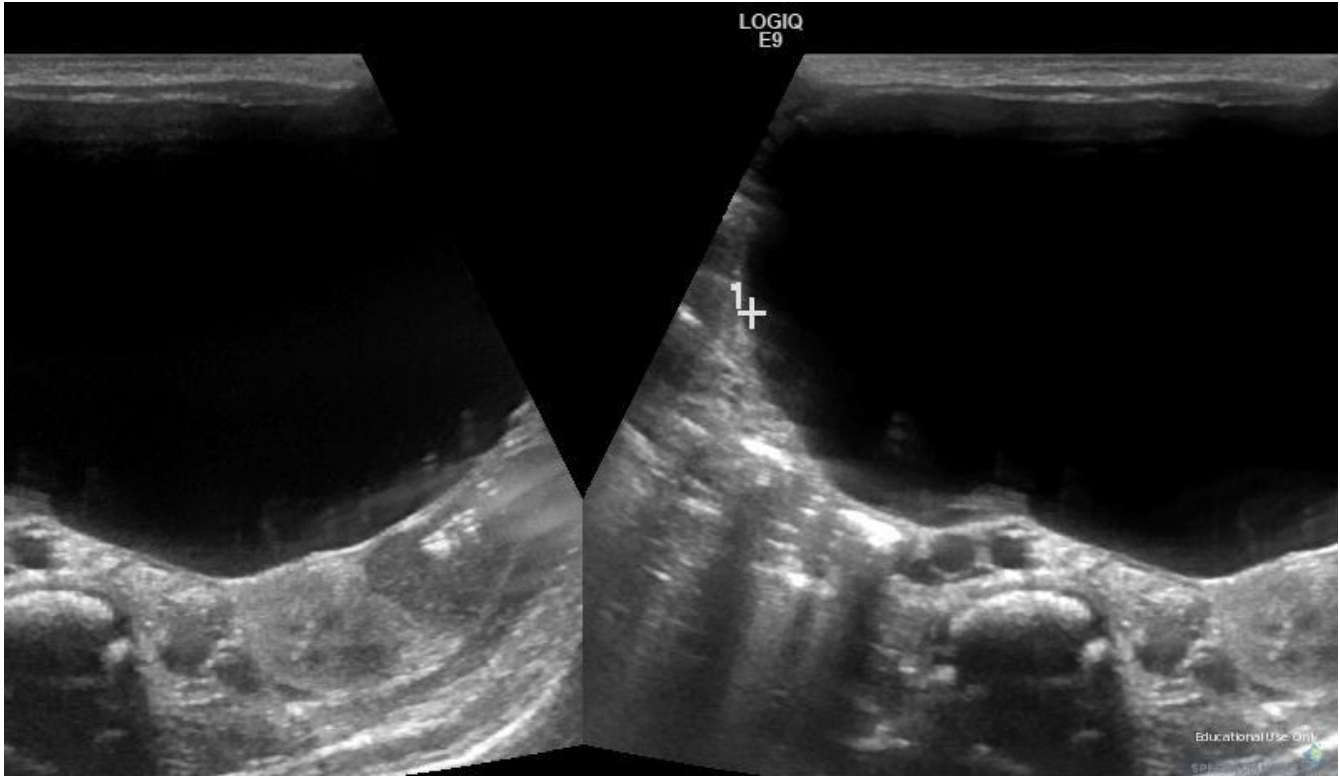


1 L 7.06 cm
2 L 5.06 cm

LOGIQ
E9

LONG

Education Use Only
SPECTRUM HEALTH





LOGIQ
E9

FR
B
- Fro
- Gn
- S/A
- Ma
- D
- DR
- AC

2-

4-

TRANS

Educational Use Only
SPECTRUM HEALTH

Sponsored By



Disclaimer

This teaching site is partially funded by an educational grant from GE Healthcare and Advanced Radiology Services, PC. The material on this site is independently controlled by Advanced Radiology Services, PC, and GE Healthcare and Spectrum Health have no influence over the content of this site
Content Download Agreement

The cases and images on this website are owned by Spectrum Health. Permission is granted (for nonprofit educational purposes) to download and print materials to distribute for the purpose of facilitating the education of health professionals. The authors retain all rights to the material and users are requested to acknowledge the source of the material.

Site Disclaimer

This site is developed to reach healthcare professionals and medical students. Nothing this site should be considered medical advice.

Only your own doctor can help you make decisions about your medical care. If you have a specific medical question or are seeking medical care, please contact your physician.

The information in this website is provided for general medical education purposes only and is not meant to substitute for the independent medical judgment of a physician relative to diagnostic and treatment options of a specific medical condition.

The viewpoints expressed in these cases are those of the authors. They do not represent an endorsement. In no event will Advanced Radiology Associates, PC, Spectrum Health Hospitals (Helen DeVos Children's Hospital) or GE Healthcare be liable for any decision made or action taken in reliance upon the information provided through this website.